



Finish Fire
Fastest Way Finish The Fire



www.a1industry.in

COMPANY OVERVIEW

A1 INDUSTRY is one of the leading manufactures of **Fire Fighting Appliances & Systems**, in india. We manufacture the complete range of '**A1 INDUSTRY**' Brand Fire Extinguisher, its spares and refills, and all its Ancillaries & Accessories Along with Designing and Integration of all types of Fixed Fire Fighting & Fire Suppression Systems.

PRODUCTS & SERVICES

- ✓ All types of Extinguishers, Fire Fighting and Fire Suppression Systems & Allied Fittings.
- ✓ Design, Assembly, Installation and Servicing of Gas & Aerosol based Fixed Fire Fighting Systems.
- ✓ Various accessories required for Manufacturing Fire Extinguishers.
- ✓ Various Manufacturing & testing Equipments for Fire Extinguishers.
- ✓ Plastic Cabinets for Fire Fighting Equipment.
- ✓ All Types of Fire Hydrant and Sprinkler Fittings and Equipment.
- ✓ Fire Detection Systems.
- ✓ Medical First Aid Kits.
- ✓ AMC for Fire Extinguisher & Fixed Fire Fighting Systems.
- ✓ Hydro Testing, Refilling, Painting of Fire Extinguishers and Non Toxic Gas Cylinders (CO₂, Halon, HFC, Air, Nitrogen etc.)
- ✓ Kitchen and Galley Fire Protection Systems.
- ✓ at-x Aerosol Fire Fighting System.
- ✓ UL Approved Clean Agents.
- ✓ Coltraco Ultrasonic Equipment.

MANUFACTURING FACILITY

Our Fire Extinguisher Manufacturing Unit Comprises of Press, Welding Shop, Machining Shop, Hydro Testing Shop, Painting Shop, Anti Corrosion Treatment Shop, Hot Phosphating, Gas & Powder filling section, Inspection, Testing department, laboratory, Marketing & Packing Section.

We have a fully Certified and Equiped Gas Transfer Station along with Hydro - testing facilities. Today **A1 INDUSTRY** has an impressive list of clientele, from practically every field viz. Shipping, Shipbuilding, Offshore Refineries, Petrochemical, Generation, Steel, Fertilizer, Defense Services, Airports, Poet Trusts, banks .etc.



THE NATIONAL SMALL
IND. CORPORATION LTD.



CE 1128 / E N 3



MAKE IN INDIA



MICRO, SMALL &
MEDIUM ENTERPRISES



GEM GOVERNMENT
eMARKETPLACE



AN ISO 9001 : 2015
CERTIFIED COMPANY

CLIENT LIST



ABC STORED PRESSURE

IS:15683



CM/L-7700044610

POWDER

STORED PRESSURE : 1Kg, 2Kg, 4Kg, 6Kg, 9Kg



1 Kg.



2 Kg.



4 Kg.



6 Kg.



9 Kg.



TYPE 'A'
FOR USE ON PAPER,
WOOD, CLOTH,
PLASTICS ETC.



TYPE 'B'
FOR USE ON PETROL,
OIL PAINTS, SPIRIT,
CHEMICALS ETC.



TYPE 'C'
FOR USE ON COOKING
& WELDING GAS,
ELECTRICAL FIRE ETC.



BURNING GASES SUCH AS
BUTANE, CHLORIDE,
NATURAL PROPANE,
VINYL CHLORIDE,
NATURAL GASES &
LIVE ELECTRICAL FIRE

IDEAL USE : HOME • OFFICE • BUILDING • WAREHOUSE FACTORIES • FACTORIES ELECTRICAL EQUIPMENT ROOMS • WELDING ARS • ETC

MODEL	RSP1	RSP2	RSP4	RSP6	RSP9
CAPACITY IN (KG)	1 KG	2 KG	4 KG	6 KG	9 KG
I.S SPECIFICATION NO.	IS 15683	IS 15683	IS 15683	IS 15683	IS 15683
FIRE RATING	1A, 21B	2A, 21B	2A, 55B	3A, 89B	4A, 144B
OPERATING TEMP°C	-20°C TO +60°C	-20°C TO +60°C	-20°C TO +60°C	-20°C TO +60°C	-20°C TO +60°C
MIN. JET LENGTH (IN MUS.)	2 MTRS.	2.5 MTRS.	3 MTRS.	4 MTRS.	5 MTRS.
DISCHARGER % MIN.	85%	85%	85%	85%	85%
DISCHARGER TIME MIN.	8 SEC.	13 SEC.	13 SEC.	13 SEC.	13 SEC.
CHARGE PRESSURE	15kgf/cm ²	15kgf/cm ²	15kgf/cm ²	15kgf/cm ²	15kgf/cm ²
TEST PRESSURE	35kgf/cm ²	35kgf/cm ²	35kgf/cm ²	35kgf/cm ²	35kgf/cm ²
OPERATING VALVES	SQUEEZE GRIP TYPE	SQUEEZE GRIP TYPE	SQUEEZE GRIP TYPE	SQUEEZE GRIP TYPE	SQUEEZE GRIP TYPE
EXTINGUISHER MEDIA	DRY POWDER 14609 (MP)	DRY POWDER 14609 (MP)	DRY POWDER 14609 (MP)	DRY POWDER 14609 (MP)	DRY POWDER 14609 (MP)
PROPELLANT	DRY NITROGEN	DRY NITROGEN	DRY NITROGEN	DRY NITROGEN	DRY NITROGEN
ANTI CORROSIVE TREATMENT	PHOSPHETING (7 TANKS)	PHOSPHETING (7 TANKS)	PHOSPHETING (7 TANKS)	PHOSPHETING (7 TANKS)	PHOSPHETING (7 TANKS)
PAINTING	EXPOXY POLYESTER POWDER COATING	EXPOXY POLYESTER POWDER COATING	EXPOXY POLYESTER POWDER COATING	EXPOXY POLYESTER POWDER COATING	EXPOXY POLYESTER POWDER COATING
TARE WEIGHT (KG)	1 KGS	1.4 KGS	2.3 KGS	2.7 KGS	3.2 KGS
GROSS WEIGHT (KG)	2 KGS	3.4 KGS	6.3 KGS	8.7 KGS	12.2 KGS

BC DRY POWDER CARTRIDGE TYPE

IS:15683



CM/L-7700044610

DCP POWDER CARTRIDGE TYPE : 4Kg, 6Kg, 9Kg,



4 Kg.

6 Kg.

9 Kg.



TYPE 'B'
FOR USE ON PETROL,
OIL PAINTS, SPIRIT,
CHEMICALS ETC.



TYPE 'C'
FOR USE ON COOKING
& WELDING GAS,
ELECTRICAL FIRE ETC.



BURNING GASES SUCH AS
BUTANE, CHLORIDE,
NATURAL PROPANE,
VINYL CHLORIDE,
NATURAL GASES &
LIVE ELECTRICAL FIRE

MODEL	RBC4	RBC6	RBC9
CAPACITY IN (KG)	4 KG	6 KG	9 KG
I.S SPECIFICATION NO.	IS 15683	IS 15683	IS 15683
FIRE RATING	55B	89B	144B
OPERATING TEMP°C	-20°C TO +60°C	-20°C TO +60°C	-20°C TO +60°C
MIN. JET LENGTH (IN MUS.)	2 MTRS.	2.5 MTRS.	3 MTRS.
DISCHARGER % MIN.	85%	85%	85%
DISCHARGER TIME MIN.	10 SEC.	15 SEC.	20 SEC.
CHARGE PRESSURE	15kgf/cm ²	15kgf/cm ²	15kgf/cm ²
TEST PRESSURE	35kgf/cm ²	35kgf/cm ²	35kgf/cm ²
OPERATING VALVES	SQUEEZE GRIP TYPE	SQUEEZE GRIP TYPE	SQUEEZE GRIP TYPE
EXTINGUISHER MEDIA	DRY POWDER 4308 (SBC)	DRY POWDER 4308 (SBC)	DRY POWDER 4308 (SBC)
PROPELLANT	Co2 CARTRIDGE 120 GM	Co2 CARTRIDGE 120 GM	Co2 CARTRIDGE 120 GM
ANTI CORROSIVE TREATMENT	PHOSPHETING (7 TANKS)	PHOSPHETING (7 TANKS)	PHOSPHETING (7 TANKS)
PAINTING	EXPOXY POLYESTER POWDER COATING	EXPOXY POLYESTER POWDER COATING	EXPOXY POLYESTER POWDER COATING
TARE WEIGHT (KG)	3.6 KGS	4.5 KGS	5.5 KGS
GROSS WEIGHT (KG)	7.6 KGS	10.5 KGS	14.5 KGS

IDEAL USE : HOME • OFFICE • BUILDING • WAREHOUSE FACTORIES • FACTORIES ELECTRICAL EQUIPMENT ROOMS • WELDING ARES • ETC

Co2 TYPE FIRE EXTINGUISHER

IS:15683



CM/L-7700044610

CARBON DIOXIDE

PROTABLE TYPE : 2Kg, 3Kg, 4.5Kg,



2 Kg.

3 Kg.

4.5 Kg.



TYPE 'B'
FOR USE ON PETROL,
OIL PAINTS, SPIRIT,
CHEMICALS ETC.



TYPE 'C'
FOR USE ON COOKING
& WELDING GAS,
ELECTRICAL FIRE ETC.



BURNING GASES SUCH AS
BUTANE, CHLORIDE,
NATURAL PROPANE,
VINYL CHLORIDE,
NATURAL GASES &
LIVE ELECTRICAL FIRE

MODEL	RCO2 - 2	RCO2 - 3	RCO2 - 4.5
CAPACITY IN (KG)	2 KG	3 KG	4.5 KG
I.S SPECIFICATION NO.	IS 15683	IS 15683	IS 15683
FIRE RATING	21B	34B	55B
OPERATING TEMP ^o C	-20 ^o C TO +60 ^o C	-20 ^o C TO +60 ^o C	-20 ^o C TO +60 ^o C
MIN. JET LENGTH (IN MUS.)	2 MTRS.	2 MTRS.	2 MTRS.
DISCHARGER % MIN.	95%	95%	95%
DISCHARGER TIME MIN.	9 SEC.	11 SEC.	18 SEC.
TEST PRESSURE	250kgf/cm ²	250kgf/cm ²	250kgf/cm ²
OPERATING VALVES	WHEEL TYPE	WHEEL TYPE	WHEEL TYPE
EXTINGUISHER MEDIA	Co2 GAS IS : 15222	Co2 GAS IS : 15222	Co2 GAS IS : 15222
PROPELLANT	CARBON DIOXIDE	CARBON DIOXIDE	CARBON DIOXIDE
PAINING	ENAMEL PAINT IS : 5 SHADE 536/538	ENAMEL PAINT IS : 5 SHADE 536/538	ENAMEL PAINT IS : 5 SHADE 536/538
TARE WEIGHT (KG)	6.2 KGS	9.5 KGS	11.5 KGS
GROSS WEIGHT (KG)	8.2 KGS	12.5 KGS	16 KGS

IDEAL USE : HOME • CHEMICAL PLANT • OIL RIGS • RAIL YARDS WAREHOUSES • AIRPORT • ELECTRICAL SUBSTATION • LARGE LABORATORIES • ETC

MECHANICAL FOAM TYPE FIRE EXTINGUISHER

IS:15683



CM/L-7700044610

FOAM



TYPE 'A'
FOR USE ON PAPER,
WOOD, CLOTH,
PLASTICS ETC.



TYPE 'B'
FOR USE ON PETROL,
OIL PAINTS, SPIRIT,
CHEMICALS ETC.

STORED PRESSURE TYPE



6 Ltr.

9 Ltr.

CARTRIDGE TYPE



6 Ltr.

9 Ltr.

IDEAL USE : HOME • PETROL STATIONS • RESTAURANTS • PAPER FACTORY • GARMENT FACTORY • ETC

MODEL	RSPM6	RSPM9	RCM6	RCM9
CAPACITY IN (KG)	6 LTR.	9 LTR.	6 LTR.	9 LTR.
I.S SPECIFICATION NO.	IS 15683	IS 15683	IS 15683	IS 15683
FIRE RATING	4A, 144B	2A, 21B	2A, 55B	4A, 144B
OPERATING TEMP ⁰ C	+5 ⁰ C TO +60 ⁰ C	+5 ⁰ C TO +60 ⁰ C	+5 ⁰ C TO +60 ⁰ C	+5 ⁰ C TO +60 ⁰ C
MIN. JET LENGTH (IN MUS.)	2 MTRS.	2.5 MTRS.	3 MTRS.	4 MTRS.
DISCHARGER % MIN.	85%	85%	85%	85%
DISCHARGER TIME MIN.	13 SEC.	13 SEC.	13 SEC.	13 SEC.
CHARGE PRESSURE	15kgf/cm ²	15kgf/cm ²	15kgf/cm ²	15kgf/cm ²
TEST PRESSURE	35kgf/cm ²	35kgf/cm ²	35kgf/cm ²	35kgf/cm ²
OPERATING VALVES	SQUEEZE GRIP TYPE	SQUEEZE GRIP TYPE	SQUEEZE GRIP TYPE	SQUEEZE GRIP TYPE
EXTINGUISHER MEDIA	AFFF	AFFF	AFFF	AFFF
PROPELLANT	DRY NITROGEN	DRY NITROGEN	DRY NITROGEN	DRY NITROGEN
ANTI CORROSIVE TREATMENT	PHOSPHETING (7 TANKS)	PHOSPHETING (7 TANKS)	PHOSPHETING (7 TANKS)	PHOSPHETING (7 TANKS)
PAINTING	EXPOXY POLYESTER POWDER COATING	EXPOXY POLYESTER POWDER COATING	EXPOXY POLYESTER POWDER COATING	EXPOXY POLYESTER POWDER COATING
TARE WEIGHT (KG)	3 KGS	3 KGS	5 KGS	5 KGS
GROSS WEIGHT (KG)	12 KGS	12 KGS	14 KGS	14 KGS

WATER TYPE FIRE EXTINGUISHER

IS:15683



CM/L-7700044610

WATER



TYPE 'A'
FOR USE ON PAPER,
WOOD, CLOTH,
PLASTICS ETC.

STORED PRESSURE TYPE



6 Ltr.

9 Ltr.

CARTRIDGE TYPE



6 Ltr.

9 Ltr.

IDEAL USE : HOME • OFFICE • RESTAURANTS • BUILDING • WAREHOUSE FACTORIES • GARMENT FACTORY • PAPER FACTORY • ETC

MODEL	RSPW6	RSPW9	RCW6	RCW9
CAPACITY IN (KG)	6 LTR.	9 LTR.	6 LTR.	9 LTR.
I.S SPECIFICATION NO.	IS 15683	IS 15683	IS 15683	IS 15683
FIRE RATING	3A	3A	3A	3A
OPERATING TEMP ⁰ C	+5 ⁰ C TO +60 ⁰ C	+5 ⁰ C TO +60 ⁰ C	+5 ⁰ C TO +60 ⁰ C	+5 ⁰ C TO +60 ⁰ C
MIN. JET LENGTH (IN MUS.)	2 MTRS.	2.5 MTRS.	3 MTRS.	4 MTRS.
DISCHARGER % MIN.	95%	95%	95%	95%
DISCHARGER TIME MIN.	13 SEC.	13 SEC.	13 SEC.	13 SEC.
CHARGE PRESSURE	15kgf/cm ²	15kgf/cm ²	15kgf/cm ²	15kgf/cm ²
TEST PRESSURE	35kgf/cm ²	35kgf/cm ²	35kgf/cm ²	35kgf/cm ²
OPERATING VALVES	SQUEEZE GRIP TYPE	SQUEEZE GRIP TYPE	SQUEEZE GRIP TYPE	SQUEEZE GRIP TYPE
EXTINGUISHER MEDIA	WATER	WATER	WATER	WATER
PROPELLANT	DRY NITROGEN	DRY NITROGEN	DRY NITROGEN	DRY NITROGEN
ANTI CORROSIVE TREATMENT	PHOSPHETING (7 TANKS)	PHOSPHETING (7 TANKS)	PHOSPHETING (7 TANKS)	PHOSPHETING (7 TANKS)
PAINTING	EXPOXY POLYESTER POWDER COATING	EXPOXY POLYESTER POWDER COATING	EXPOXY POLYESTER POWDER COATING	EXPOXY POLYESTER POWDER COATING
TARE WEIGHT (KG)	3 KGS	3 KGS	5 KGS	5 KGS
GROSS WEIGHT (KG)	12 KGS	12 KGS	14 KGS	14 KGS

CLEAN AGENT FIRE EXTINGUISHER

IS:15683



CM/L-7700044610

CLEAN AGENT TYPE



2 Kg.



4 Kg.



6 Kg.

MODEL	RCA2	RCA4	RCA6
CAPACITY IN (KG)	2 KGS.	4 KGS	6 KGS.
I.S SPECIFICATION NO.	IS 15683	IS 15683	IS 15683
FIRE RATING	1A, 21B	2A, 34B	2A, 55B
OPERATING TEMP°C	-20°C TO +60°C	-20°C TO +60°C	-20°C TO +60°C
MIN. JET LENGTH (IN MUS.)	2 MTRS.	3 MTRS.	4 MTRS.
DISCHARGER % MIN.	85%	85%	85%
DISCHARGER TIME MIN.	12 SEC.	14 SEC.	1 SEC.
CHARGE PRESSURE	15kg/cm ²	15kg/cm ²	15kg/cm ²
TEST PRESSURE	35kg/cm ²	35kg/cm ²	35kg/cm ²
OPERATING VALVES	SQUEEZE GRIP TYPE	SQUEEZE GRIP TYPE	SQUEEZE GRIP TYPE
EXTINGUISHER MEDIA	CLEAN AGENT GAS	CLEAN AGENT GAS	CLEAN AGENT GAS
PROPELLANT	DRY NITROGEN	DRY NITROGEN	DRY NITROGEN
ANTI CORROSIVE TREATMENT	PHOSPHETING (7 TANKS)	PHOSPHETING (7 TANKS)	PHOSPHETING (7 TANKS)
PAINTING	EPOXY POLYESTER POWDER COATING	EPOXY POLYESTER POWDER COATING	EPOXY POLYESTER POWDER COATING
TARE WEIGHT (KG)	1.4 KGS	2.3 KGS	3 KGS
GROSS WEIGHT (KG)	3.4 KGS	6.3 KGS	9 KGS



TYPE 'A'
FOR USE ON PAPER,
WOOD, CLOTH,
PLASTICS ETC.



TYPE 'B'
FOR USE ON PETROL,
OIL PAINTS, SPIRIT,
CHEMICALS ETC.



TYPE 'C'
FOR USE ON COOKING
& WELDING GAS,
ELECTRICAL FIRE ETC.



BURNING GASES SUCH AS
BUTANE, CHLORIDE,
NATURAL PROPANE,
VINYL CHLORIDE,
NATURAL GASES &
LIVE ELECTRICAL FIRE

IDEAL USE : HOME • OFFICE • BUILDING • WAREHOUSE FACTORIES • FACTORIES ELECTRICAL EQUIPMENT ROOMS • WELDING ARES • ETC

MODULAR TYPE FIRE EXTINGUISHER

AUTOMATIC CEILING MOUNTED FIRE EXTINGUISHERS



MODEL	RSPM2	RSPM5	RCM10	RCM15
CAPACITY IN (KG)	2 KGS.	5 KGS.	10 KGS.	15 KGS.
AREA PROTECTION IN M2	1 TO 1.5	3.5 TO 4	07 TO 08	015 TO 020
OPERATING TIME	4 - 5 SECONDS	6 - 8 SECONDS	10 - 15 SECONDS	15 - 20 SECONDS
WORKING PRESSURE	7 TO 15kgf/cm ²	7 TO 15kgf/cm ²	7 TO 15kgf/cm ²	7 TO 15kgf/cm ²
VOLUME PROTECTION	3M3	8M3	15M3	20M3
HANGING VERTICALLY ABOVE RISK	1.5 M	1.5 - 2 M	1.75 - 2.2 M	2 TO 3 M
TEST PRESSURE	35kgf/cm ²	35kgf/cm ²	35kgf/cm ²	35kgf/cm ²
OPERATING TEMPERATURE	68°C	68°C	68°C	68°C
OPERATING VALVE	AUTOMATIC	AUTOMATIC	AUTOMATIC	AUTOMATIC
EXTINGUISHER MEDIA	DRY POWDER CLEAN AGENT GAS	DRY POWDER CLEAN AGENT GAS	DRY POWDER CLEAN AGENT GAS	DRY POWDER CLEAN AGENT GAS
EXPELLANT	DRY NITROGEN	DRY NITROGEN	DRY NITROGEN	DRY NITROGEN
ANTI CORROSIVE TREATMENT	PHOSPHETING (7 TANKS)	PHOSPHETING (7 TANKS)	PHOSPHETING (7 TANKS)	PHOSPHETING (7 TANKS)
PAINTING	EXPOXY POLYESTER POWDER COATING	EXPOXY POLYESTER POWDER COATING	EXPOXY POLYESTER POWDER COATING	EXPOXY POLYESTER POWDER COATING
TARE WEIGHT (KG)	2.2 KGS	3.4 KGS	5.2 KGS	5.2 KGS
GROSS WEIGHT (KG)	4.2 KGS	5.4 KGS	10.2 KGS	15.2 KGS



TYPE 'A'
FOR USE ON PAPER,
WOOD, CLOTH,
PLASTICS ETC.



TYPE 'B'
FOR USE ON PETROL,
OIL PAINTS, SPIRIT,
CHEMICALS ETC.



TYPE 'C'
FOR USE ON COOKING
& WELDING GAS,
ELECTRICAL FIRE ETC.



BURNING GASES SUCH AS
BUTANE, CHLORIDE,
NATURAL PROPANE,
VINYL CHLORIDE,
NATURAL GASES &
LIVE ELECTRICAL FIRE

IDEAL USE : HOME • OFFICE • BUILDING • WAREHOUSE FACTORIES • FACTORIES ELECTRICAL EQUIPMENT ROOMS • WELDING AREAS • ETC

KITCHEN TYPE FIRE EXTINGUISHER

Class K Fires are fires that involve cooking oils, grease or animal for and can be extinguished using Wet Chemical, the typical agent found in kitchen fire extinguisher.

Available Capacity : 4kg, 6kg, & 9kg.

Suitable For : Kitchen Fire. (Vegetable/Animal Oil & Fat Fire)

Ideal Usage : Kitchen Fire.

FEATURES

- ▶ Simple Operation and Maintenance
- ▶ Wide Angle, Soft Discharge Spray Pattern
- ▶ Natural Polished Stainless Steel Body
- ▶ Easily Rechargeable

Specification

Available Capacity	: 1kg, 2kg, 4kg, 6kg, & 9kg.
Working Temperature	: +5°C to +55°C
Cylinder Testing Pressure	: 30 Bar
Service Pressure	: 15 Bar
Filling Tolerance	: 0,(-)5% by Volume
Minimum Effective Discharge Time	: 8 Seconds (Minimum)
Discharge Quality	: More than 90%

CHEMICAL CHARGE

Charge : Wet Chemical

Propellent : Nitrogen

SUITABILITY

Class of fire : Class K (Vegetable / Animal Oil / Fat Fire)



WHEELED FIRE EXTINGUISHER CARBON DIOXIDE TYPE (CO2)



6.5 Kg.



9 Kg.



22.5 Kg.



TYPE 'B'
FOR USE ON PETROL,
OIL PAINTS, SPIRIT,
CHEMICALS ETC.



TYPE 'C'
FOR USE ON COOKING
& WELDING GAS,
ELECTRICAL FIRE ETC.



BURNING GASES SUCH AS
BUTANE, CHLORIDE,
NATURAL PROPANE,
VINYL CHLORIDE,
NATURAL GASES &
LIVE ELECTRICAL FIRE

MODEL	RCO2 - 6.5	RCO2 - 9	RCO2 - 22.5
CAPACITY IN (KG)	6.5 KGS.	9 KGS	22.5 KGS.
IS NO.	IS : 16018	IS : 16018	IS : 16018
FIRE RATING	55B	55B	89B
OPERATING TEMP ^o C	-20 ^o C TO +60 ^o C	-20 ^o C TO +60 ^o C	-20 ^o C TO +60 ^o C
MIN. JET LENGTH (IN MUS.)	2 MTRS.	3 MTRS.	4 MTRS.
DISCHARGER % MIN.	95%	95%	95%
DISCHARGER TIME MIN.	MORE THAN 15 SEC.	MORE THAN 15 SEC.	MORE THAN 15 SEC.
TEST PRESSURE	250 kgf/cm ²	250 kgf/cm ²	250 kgf/cm ²
OPERATING VALVES	WHEEL TYPE	WHEEL TYPE	WHEEL TYPE
EXTINGUISHER MEDIA	Co2	Co2	Co2
PROPELLANT	DRY NITROGEN	DRY NITROGEN	DRY NITROGEN
PAINTING	ENAMEL PAINT	ENAMEL PAINT	ENAMEL PAINT
TARE WEIGHT (KG)	14 KGS	20 KGS	43.5 KGS
GROSS WEIGHT (KG)	20.5 KGS	29 KGS	65.7 KGS

IDEAL USE : HOME • CHEMICAL PLANT • OIL RIGS • RAIL YARDS WAREHOUSES • AIRPORT • ELECTRICAL SUBSTATION • LARGE LABORATORIES • ETC

WHEELIE FIRE EXTINGUISHER

DRY CHEMICAL POWDER ABC / BC TYPE



TYPE 'B'
FOR USE ON PETROL,
OIL PAINTS, SPIRIT,
CHEMICALS ETC.



TYPE 'C'
FOR USE ON COOKING
& WELDING GAS,
ELECTRICAL FIRE ETC.



BURNING GASES SUCH AS
BUTANE, CHLORIDE,
NATURAL PROPANE,
VINYL CHLORIDE,
NATURAL GASES &
LIVE ELECTRICAL FIRE



25 Kg.



25 Kg.



50 Kg.



75 Kg.

WHEELED FIRE EXTINGUISHER

FOAM / WATER BASED TYPE



TYPE 'A'
FOR USE ON PAPER,
WOOD, CLOTH,
PLASTICS ETC.



TYPE 'B'
FOR USE ON PETROL,
OIL PAINTS, SPIRIT,
CHEMICALS ETC.



TYPE 'A'
FOR USE ON PAPER,
WOOD, CLOTH,
PLASTICS ETC.



45 LTR.



150 LTR.



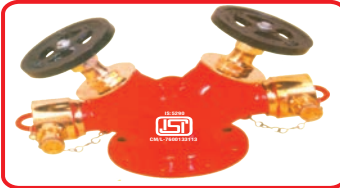
45 LTR.



FIRE HYDRANT ACCESSORIES



SINGLE HYDRANT VALVE



GUM METAL DOUBLE OUTLET HYDRANT VALVE



SS DOUBLE OUTLET HYDRANT VALVE



TWO WAY



THREE WAY



FOUR WAY



RRL HOSE PIPE



RRL HOSE TYPE B



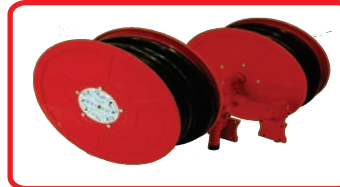
SHORT BRANCH PIPE WITH NOZZLE



HOSE COUPLING



FIRE DABBLE DOOR HOSE BOX



HOSE REEL DRUM



FIRE EXTINGUISHER BOX



SINGLE DOOR HOSE BOX



LUGS



WATER SPRINKLER

FIRE HYDRANT ACCESSORIES



FOG NOZZLE



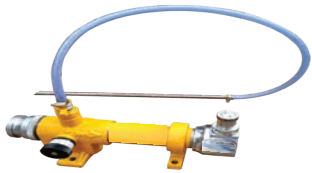
MULTI PURPOSE NOZZLE



CURTAIN NOZZLE



WATER MONITOR



VARIABLE INLINE INDUCTOR



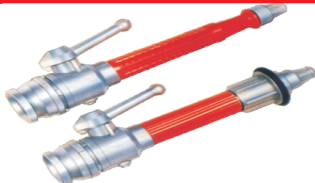
FOAM BARREL



FB - 5X, 10X



FOAM MONITOR



HAND CONTROLLED BRANCH PIPES



N2 PRESSURING MACHINE



AUTOMATIC FIRE PANEL



FIRE SAFETY SIGNAGE



REVOLVING BRANCH PIPE



FIRE BUCKET STAND



FLOOR STAND



SHUTOFF NOZZLE



A1 INDUSTRY

Unit No. 17,18,19 Alwin Compound Yadav Nagar Khairani Road Sakinaka Mumbai - 400 072.

Tel.: +91 22 2851 0635 Mob.: +91 9594226371 / 76780 03602 / 76780 03648

E-mail - a1industry1992@gmail.com • Web.: www.a1industry.in